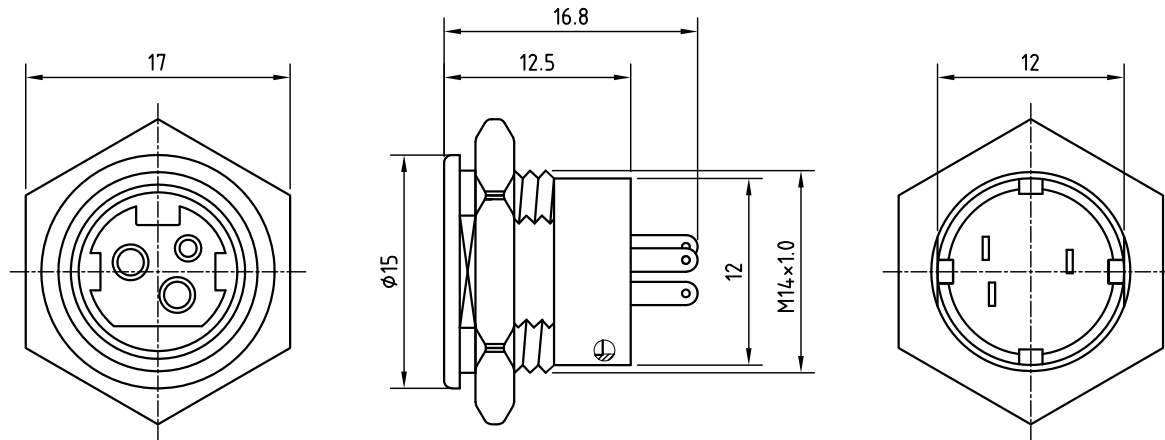


REV.	Description	Date
1	rate voltage revise	2017/11/30
2	dimensions revise	2018/12/14



### Specification

Current rating : Large Pin 7.5A max.  
 Small Pin 1A max.  
 Rated voltage : 48V/DC max.  
 Operation temperature: -20~85°C

RoHS

TOLERANCE X±0.5 X.X±0.3

4	Screw	Brass	Nickel ptd.
3	Shell	Brass	Nickel ptd.
2	PIN	Phosphor bronze	Nickel ptd.
1	Housing	P.B.T	UL94V-0
Item	Description	Material	Treat & Remark



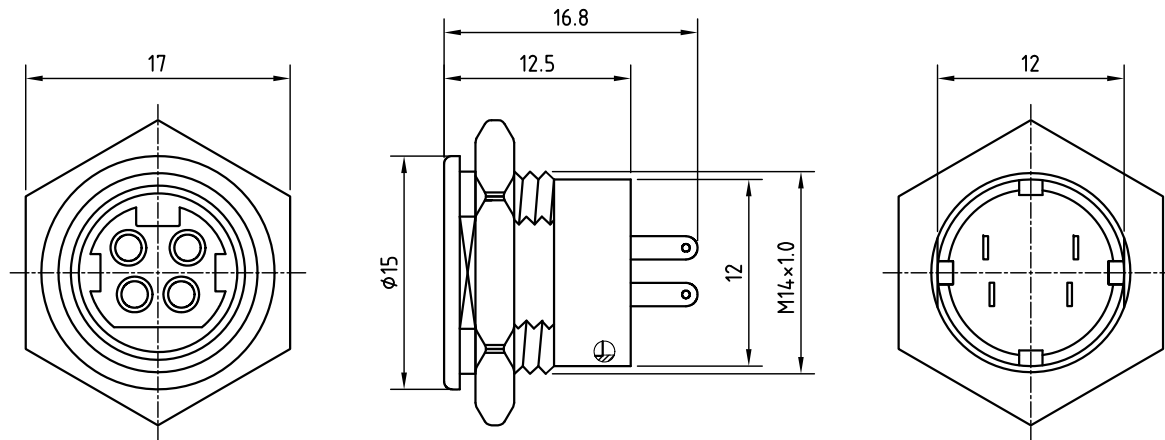
**Unicable Co., Ltd. 國陽電業有限公司**

5F., No. 111-33, Sec. 4, San Ho Road., San Chung Dist., New Taipei City, Taiwan, R.O.C.  
<http://www.unicable.com.tw> TEL:+886-2-2286-2122 FAX:+886-2-2286-1010

DATE	2018/12/14	PART NO.	UT-A001-3SP
DWN	GINA	REV.	2
CHK			
UNIT	MM		

ITEM	Circular Power Connector Push Lock Type
------	---

REV.	Description	Date
1	rate voltage was 25V is 48V	2017/11/9
2	dimensions revise	2018/12/14



### Specification

Current rating : 7.5A/DC max.  
 Rated voltage : 48V/DC max.  
 Operation temperature: -20~85°C

RoHS

TOLERANCE X±0.5 X.X±0.3

4	Screw	Brass	Nickel ptd.
3	Shell	Brass	Nickel ptd.
2	PIN	Phosphor bronze	Nickel ptd.
1	Housing	P.B.T	UL94V-0
Item	Description	Material	Treat & Remark



**Unicable Co., Ltd. 國陽電業有限公司**

5F., No. 111-33, Sec. 4, San Ho Road., San Chung Dist., New Taipei City, Taiwan, R.O.C.  
<http://www.unicable.com.tw> TEL:+886-2-2286-2122 FAX:+886-2-2286-1010

DATE	2018/12/14	PART NO.	UT-A001-4SP
DWN	GINA	REV.	2
CHK			
UNIT	MM		

ITEM Circular Power Connector Push Lock Type